



1985 CABRIOLET



THE 1985 CABRIOLET

The Cabriolet is as much a frame of mind as it is an automobile. For it harkens back to a time when open air touring was the epitome of automotive excitement.

Yet, there is nothing old-fashioned about the Cabriolet. It has been meticulously crafted by the Karmann Coachworks of Osnabrück, Germany, as a true, up-to-date convertible. And it is endowed with the most sophisticated German engineering.

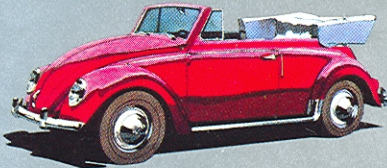
The result is performance that's positively exhilarating, as well as rewarding. For the Cabriolet is perhaps the most efficient way to drive from one place to another with the wind in your hair.

Once again Volkswagen brings a breath of fresh air to the automotive world.





Although the 1985 Cabriolet is new, the philosophy upon which it was built goes back to the very first Beetle convertible introduced in America. The Beetle convertible astonished the automotive world with its efficiency, reliability and common sense. It taught America that sophisticated engineering and value need not be mutually exclusive. And it showed that a car was meant to last longer than one or two model years.



The sporty and popular VW Convertible.

We still travel our own road

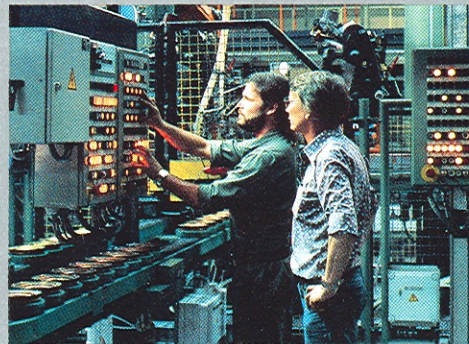
Today, we still design these basic virtues into every Volkswagen we build. And we still refuse to follow popular trends.

We demand that the laws of aerodynamics take precedence over current design fads. We still believe in an evolution of excellence, the continual process of improvement and

refinement in the pursuit of perfection. We insist on the strictest quality control, with the result that every part of every Volkswagen undergoes several inspections by both man and computer. And, although we employ the latest technology in our manufacturing process, we believe in traditional craftsmanship, in artisans who maintain standards of pride and dedication no machine can ever match.

A passion for perfection

Our German engineers impart their own unabashed passion for engineering excellence and overall performance into every Volkswagen they design.

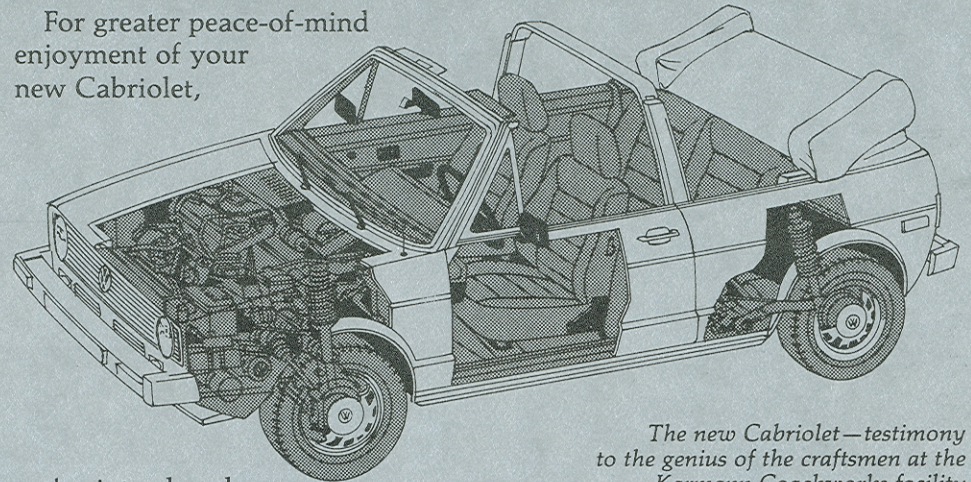


They employ advanced technology instead of automotive gimmickry. They provide outstanding efficiency without compromising stunning performance. And they engineer every Volkswagen with such precision that virtually every driving command can be executed swiftly.

As a result, you do not drive a car. You have the unique pleasure of driving a Volkswagen.

The Volkswagen 2-year Unlimited Mileage Protection Plan

For greater peace-of-mind enjoyment of your new Cabriolet,



The new Cabriolet—testimony to the genius of the craftsmen at the Karmann Coachworks facility in Osnabrück, West Germany.

we've introduced a new Protection Plan that's as simple and straightforward as a Volkswagen itself.

Your new Cabriolet is protected by a 2-year unlimited mileage limited warranty on the entire vehicle (except tires), and a 3-year unlimited mileage limited warranty on rust perforation. See your U.S. Volkswagen dealer for details.

Isn't it nice to feel secure in your decision to drive a new Volkswagen?



Volkswagen World Headquarters in Wolfsburg, West Germany.

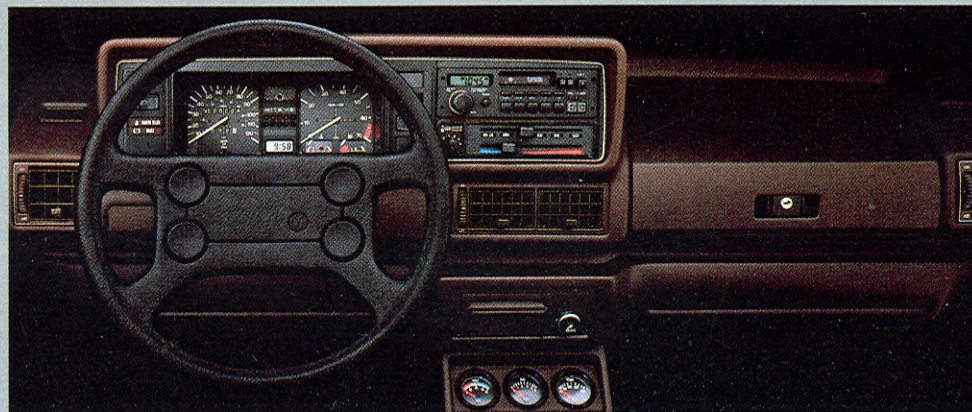
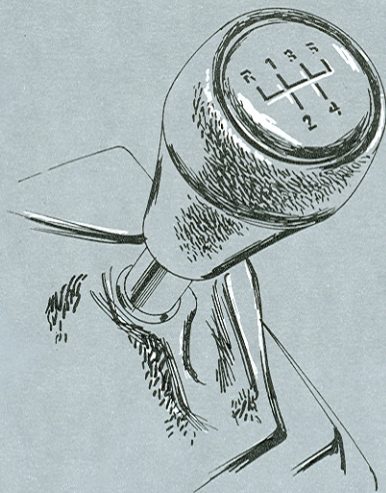
The Cabriolet is a fun-filled combination of power, performance and panache. The power comes from a 1.8 liter fuel-injected engine coupled to a 5-speed close ratio transmission. The exhilarating performance is provided by a sports suspension, rack and pinion steering, vented front disc brakes and front-wheel drive. And the panache is supplied by one of the most stylish bodies ever crafted by the Karmann Coachworks.

Concern for your comfort is evident in the insulated, three layered top that's fitted with a heated real glass rear window. An electronic AM/FM stereo cassette with 4 speakers and reclining bucket seats add to your pleasure.

But nothing can add to the pure, unadulterated joy of putting the top down and letting your Cabriolet take you for a ride on the wind.



Cabriolet's full instrumentation includes a center console with voltmeter, oil pressure and temperature gauges.



UNLIMITED HEAD ROOM, UNLIMITED FUN

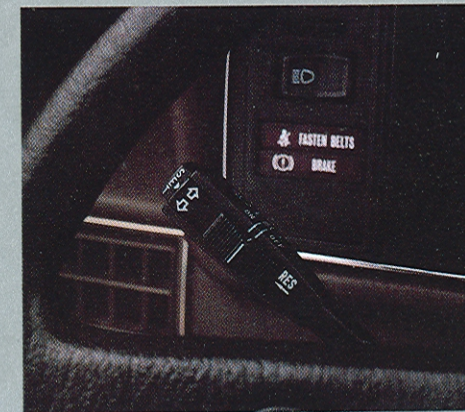
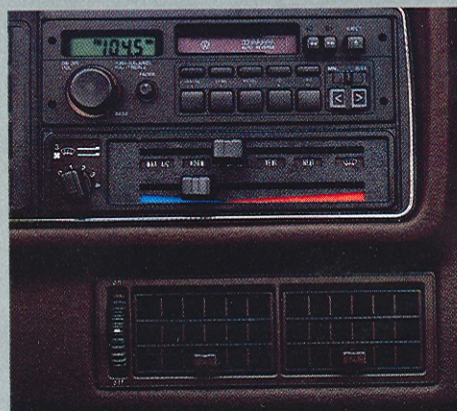


PERSONALIZE YOUR CABRIOLET

Since everyone's driving habits differ, a complete selection of options will help you equip your Cabriolet to meet your personal preferences.

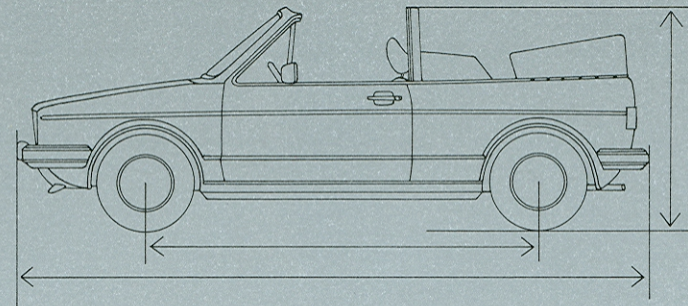
For those times when it's too hot to put the top down, air-conditioning is available. To let your Cabriolet share some of the driving chores, select an automatic transmission, power steering and cruise control. Sports seats will enhance the interior, while light alloy wheels will make your Cabriolet look even sportier.

Features and options pictured include: an electrically heated glass rear window (std.), boot for convertible top (std.), sport seats, AM/FM stereo cassette (std.), remote controlled mirrors (std.), alloy wheels and cruise control.



FEATURES AND OPTIONS

S=Standard O=Optional —=Not Available		CABRIOLET
MECHANICAL		
1.8 liter 4-cylinder OHC fuel-injected engine	S	
5-speed, close ratio manual transmission	S	
Electronic breakerless ignition	S	
Tachometer and digital clock	S	
MacPherson strut front suspension	S	
Independent rear suspension	S	
Sport springs and shock absorbers	S	
Front and rear stabilizer bars	S	
Rack and pinion steering	S	
Power assisted brakes (vented front disc/rear drum)	S	
Steel belted radial tires	S	
EXTERIOR		
Unitized construction with energy absorbing front and rear crush zones	S	
Bright anodized aluminum energy absorbing bumpers	S	
Round headlights with solenoid controlled ignition override	S	
Remote controlled outside mirrors	S	
Tinted glass	S	
Wheelhouse flares	S	
Protective belt line molding	S	
Body cavity wax coating and full factory undercoating	S	
Bright trim rings and hub caps	S	
Vent windows	S	
Lockable gas cap	S	
INTERIOR		
Padded instrument panel with full instrumentation including speedometer and trip odometer, tachometer, digital clock	S	
Center console with oil pressure and temperature gauges, and a voltmeter	S	
Sport steering wheel with energy absorbing column	S	
Reclining bucket seats with adjustable head restraints	S	
Stalk controls for high beams, turn signals, passing lights	S	
Intermittent 2-speed wipers and washer	S	
AM/FM stereo cassette radio with 4 speakers	S	
Electrically heated rear glass window	S	
Wall to wall carpeting	S	
Courtesy light	S	
Padded convertible top	S	
Boot for convertible top	S	
Lockable glove box	S	
Vanity mirror	S	
Illuminated ashtray with cigarette lighter	S	
3-point inertia reel front seat belts	S	
2 rear retractor seat belts	S	
OPTIONS		
Air conditioning	O	
Automatic transmission	O	
Triple White bestseller package	O	
Power steering	O	
Cloth sport seats	O	
5½J x 13 light alloy wheels	O	
175/70SR13 WSW tires	O	
Metallic paint	O	



SPECIFICATIONS

		CABRIOLET		
ENGINE TYPE	4-cylinder, in-line SOHC fuel-injected			
DISPLACEMENT	1.8 liter, 109 cu. in.			
HORSEPOWER @ RPM (SAE Net)	90 @ 5,500			
TORQUE @ RPM	100 ft. lbs. @ 3,000			
BODY/FRAME CONSTRUCTION	Unitized construction, bolt-on front fenders			
FRONT SUSPENSION	Independent MacPherson struts, stabilizer bar, coil springs, telescopic shock absorbers			
REAR SUSPENSION	Independent stabilizer axle, stabilizer bar, coil springs, telescopic shock absorbers			
STEERING TYPE	Rack and pinion			
TURNING CIRCLE	31.2 ft.			
BRAKES	Dual diagonal circuits with power assist. Vented 9.4" front discs, 7.1" rear drums, self-adjusting. Mechanical parking brake			
DIMENSIONS				
Wheelbase	94.5"			
Front track	54.7"			
Rear track	53.5"			
Overall length	159.3"			
Overall width	64.2"			
Overall height	55.6"			
Ground clearance	4.9"			
CAPACITIES				
Luggage capacity	6.2 cu. ft.			
Fuel tank capacity	13.8 U.S. gallons			
WHEELS AND TIRES				
Steel wheels	5½J x 13			
Steel belted radials	175/70SR13			
EPA MILEAGE ESTIMATES*				
	CITY	50 STATES	HIGHWAY	
Cabriolet w/5-speed	24		29	
Cabriolet w/automatic	23		25	
EXTERIOR COLORS				
Cabriolet	Alpine White**		Papyrus Green Metallic	
	Mars Red		Titan Red Metallic	
	Flash Silver Metallic		Rock Grey Metallic	
	Graphite Black Metallic			

** Available only with "Triple White Bestseller" package. See your Volkswagen dealer for color and trim selections.

*Remember: Use the CITY mileage for comparison to others. Your actual mileage may vary depending on speed, trip length and weather. Your highway mileage will probably be lower.

Volkswagen of America, Inc. believes the specifications in this brochure to be correct at time of printing. However, specifications, standard equipment and options are subject to change without notice. Some options may be unavailable when your vehicle is built. Please ask your dealer for advice concerning current availability of options and verify that your vehicle includes the optional equipment you ordered.

VOLKSWAGEN, GOLE JETTA, SCIROCCO, QUANTUM and VANAGON are registered trademarks of VOLKSWAGENWERK AG. Form No. W64 155 6011 Litho in U.S.A.

THE 1985 VOLKSWAGEN TRANSPORTATION SYSTEM

If the Cabriolet doesn't meet your particular driving needs, consider one of the other members of the Volkswagen family.

The Golf sets new standards of versatility, performance, roominess and efficiency for hatchbacks.

The Jetta is the first affordable German road car.

The Scirocco is a true German sports coupe featuring brilliant performance at a practical price.

The Quantum Wagon is a European family wagon offering versatility, precise German engineering and outstanding driver control at an exceptionally affordable price.

The Quantum GL Sedan provides the sophisticated handling and elegant comfort of a German grand touring sedan in the classic European tradition.

The Vanagon combines the roominess and versatility of a full-size passenger van with the comfort, ease of handling and economy of a mini-van.

The Volkswagen Camper offers the camping enthusiast outstanding flexibility, comfort and convenience in a truly unique recreational vehicle.

Whichever you choose, your Volkswagen will be the single smartest purchase you can make to meet your transportation needs.



IT'S NOT A CAR
IT'S A VOLKSWAGEN

