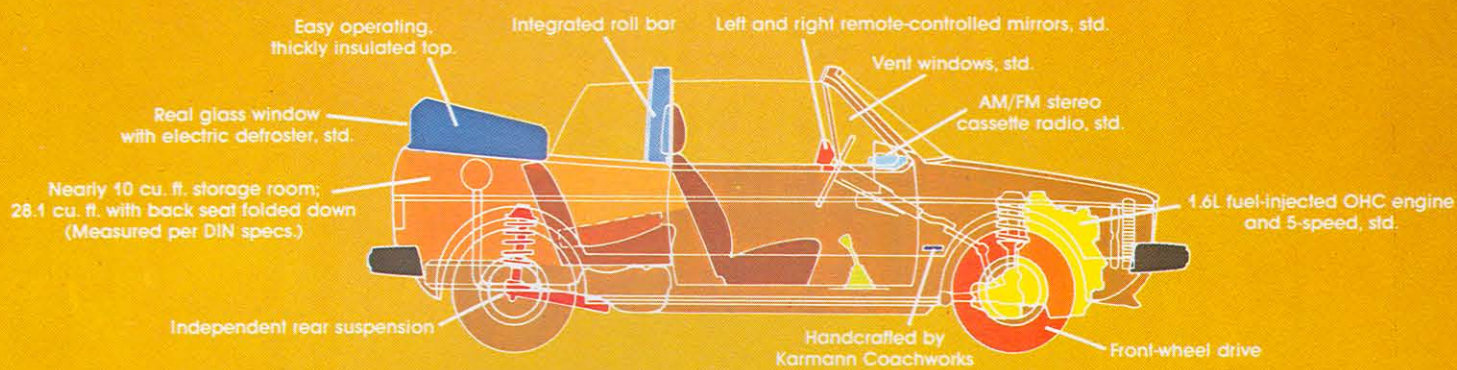


Rabbit





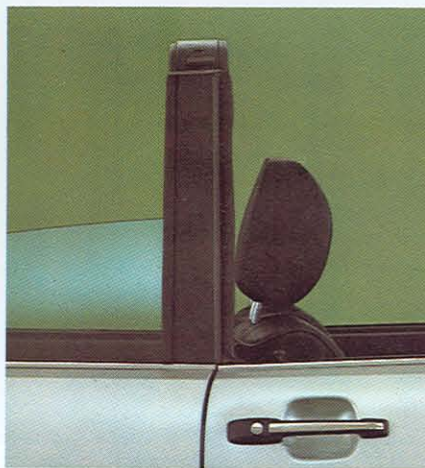
Rabbit 4-seater convertible in Brazil Brown Metallic.
Interior: Gazelle leatherette. Top: Sand.

Rabbit Convertible.

A brand new, very rare Original.

Today, only a very few convertibles remain. They're fun — but unfortunately most of them are far too small to be practical. So, Volkswagen has engineered a brand new convertible for you. Good looking. Fun to drive. And very generous with space. Room for four people. Room for luggage, even with the top down. Room for all kinds of things with the rear seat folded down. One look and you know you can't wait to own

one. And for a great many more reasons than you might expect. First off: it moves! The 1.6-liter fuel-injected, overhead-cam engine matched to a 5-speed gearbox helps you eat up fun-filled miles with the overdrive fifth gear (0.76-to-1 ratio). The coachwork by Karmann, as expected, is first class. After all, they've been building VW convertibles for over 30 years. The



Integrated roll bar

top fits snug. Keeps out the weather and the wind noise. Easily folded down or back up by just one person. But more fun if done by two.

We make our brand-new convertible only one way: handsomely equipped with all the niceties you would expect — at no extra charge. For example: AM/FM stereo cassette sound system with right and left, in-door, speakers. Front vent windows. Remote-control outside mirrors,

right and left. There's even an electric rear-window defroster. (Can you name another convertible in the world that has it?)

You have your own, personal reasons for wanting one. Since these are all crafted by highly-skilled and unhurried Old World coach builders, our production is necessarily limited.

A very rare Original, indeed!



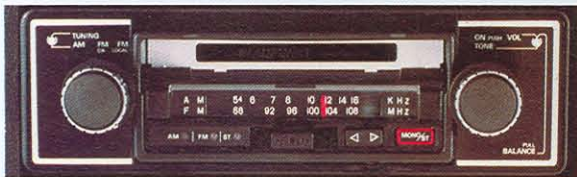
Rabbit 4-seater convertible: Diamond Silver Metallic exterior. Black leatherette interior. Black top. (Other colors and trims, Page 15.)

Rabbit Options

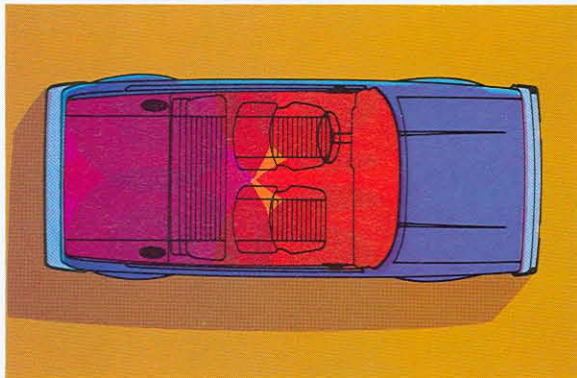
The following are individual, popular Rabbit options and their availability. See also the "option packages" on the opposite page. (Code Number preceding option will enable your VW dealer to provide information in greater detail.)



Steel sunroof, optional on all Rabbit C and L models.



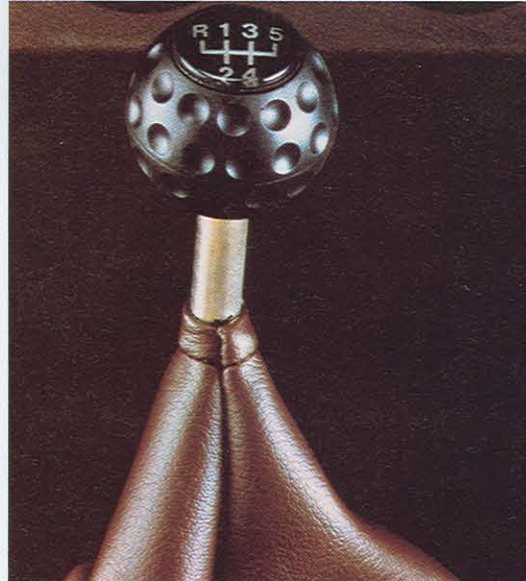
AM/FM stereo cassette radio. (Std., Convertible.)



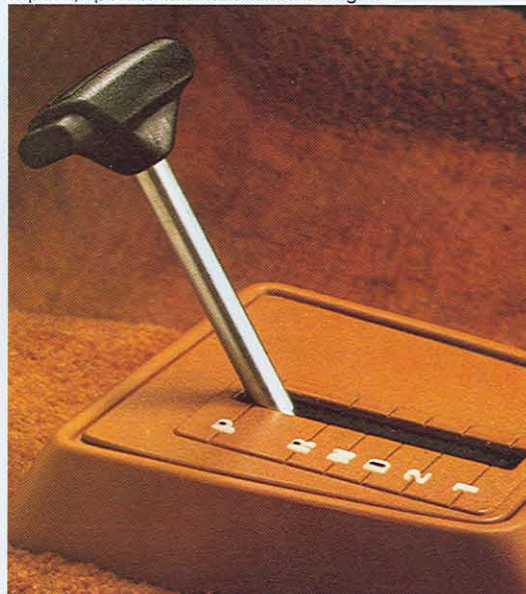
Four-speaker stereo setup, optional, Rabbit C and L.



Air conditioning, optional with Diesel engines, too.



5-speed, optional with 1.6L and Diesel engines.



Automatic transmission, optional w/1.6L engine only.

- 044** Passive-restraint system (standard "L"; optional "C" models).
- 096** Radio, AM/FM, push-button (standard "L"; optional "C").
- 453** Radio, AM/FM stereo, speakers in door panels.
- 489** Radio, AM/FM stereo push-button with cassette player (Std., Convertible).
- 494** Dual rear speakers, with stereo balance control.
- 102** Rear window defroster, electric (standard C/L and Conv.; optional base model).
- 128** 155 SR 13, steel-belted radial whitewalls (C/L only).*
- 164** Larger, steel-belted radial tires, 175/70 SR 13 (C/L only). (Require Code 485 or 574 wheels.)
- 952** 175/70 SR 13, steel-belted radials, with raised white letters (optional C/L). (Require Code 485 or 574 wheels).*
- 485** Light-alloy wheels, C/L, Convertible only.*
- 222** Diesel engine, 1.5-liter, 48 hp, C/L only (with 63 Amp/hr battery, 55-amp. alternator). N.A., California.
- 249** Automatic transmission (only w/1.6L fuel-injected engine, Code 556, C/L only).
- 425** Rear window wiper and washer, C/L only.
- 481** 5-speed manual transmission (C/L only, with 1.6L or Diesel engines; Std., Convertible).
- 556** 1.6L fuel-injected engine, with 55-amp. alternator, 54 Amp/hr battery (standard for California and Convertible; opt., C/L in 49 states).
- 560** Sunroof, steel, with wind deflector (C/L only).
- 561** Vent windows, front ("C" only; std., "L" and Conv.).
- 565** Sport steering wheel ("C" only).**
- 568** Tinted glass, all around (std., "L" and Convertible).
- 573** Air-conditioning (C/L, only with Z60 or Z61, requires Code 568, tinted glass, std., L and Convertible; optional C).**
- 635** Heavy-duty heat exchanger, all models (except with Code 573, air conditioning).
- 930** Remote-control, outside mirror, driver side (standard "L" and Convertible; optional "C").
- 931** Remote-control mirror, passenger side (only with 930; std., Convertible).
- 961/962** Wheel trim rings, with bright hubcaps ("C" only).
- 968** Floor mats, front and rear.

Specifications, standard equipment and options subject to change without notice.

*Delayed introduction.

**Also available on Convertible.

Rabbit Option Packages

A number of options have been grouped into "packages". Some of the items are available individually (see left-hand page), others exist only in these packages. The Package Code Number enables your VW dealer to give you information in greater detail.

250 Custom Exterior Package ("C" models only).

- Chrome bumpers
- Rubber impact strip, front/rear
- Bumper guards, front/rear
- Bright rocker-panel molding
- Bright hatchdoor molding
- Bright window molding, all around
- Wheel trim rings.

251 Convenience Package ("C" models only).

- Vanity mirror
- Lockable glovebox
- Rear ashtray
- Inside hood release
- 4-way washer/wiper system
- Front/rear floor mats
- Luggage compartment, fully carpeted
- Luggage compartment light, with hatch switch
- Glovebox light
- Engine compartment light.

253 Deluxe Decor Group ("L" models only).*

- Rabbit "LS" nameplate
- Luggage compartment light, with hatchdoor switch
- Glovebox light
- Engine compartment light
- Bright wheel-opening moldings
- Dual tone horn
- Vanity mirror
- Remote-control, outside mirror, passenger side
- 4-way washer/wiper system
- Integral armrests
- Seat pads and covers upgraded to crushed velour
- Luggage compartment lined with color-keyed cut-pile carpeting
- Additional sound insulation
- Heavier, 18 oz. cut-pile carpeting throughout, with matching grade on rear package tray.

256 Special Instrumentation (C/L models, N/A w/Diesel).*

- Center console with electric quartz chronometer, voltmeter, and engine-oil temperature
- Tachometer in instrument panel
- Instrument cluster panel woodgrain surface with bright edge, dual pod (only on "C"; standard on "L")
- Resettable trip odometer in speedometer dial (only on "C"; standard on "L").

260 Heavy-Duty Package (with Diesel engine).

- Heavy-duty radiator
- Heavy-duty alternator, 65-amperes.

261 Heavy-Duty Electrical Package (with gasoline engines).

- Heavy-duty radiator cooling fan, 200 W
- Heavy-duty battery, 63-AH rated
- Heavy-duty alternator, 65-amperes.

M948 Quiet Insulation Package (C/L only) • Complete sound insulation, includes additional insulation on luggage compartment floor, insulation on rear wheel-housing with fleece carpeting, additional insulation under rear seat, additional fleece carpeting in luggage compartment.

*Delayed introduction.

Rabbit Specifications

	49-STATE STANDARD ENGINE Not Available In California	CALIFORNIA STANDARD ENGINE Optional, 49-States	DIESEL ENGINE Optional
Number of cylinders	4	4	4
Bore x Stroke (inches) (metric)	3.13" x 2.89" 79.5mm x 73.4mm	3.13" x 3.15" 79.5mm x 80.0mm	3.01" x 3.15" 76.5mm x 80.0mm
Displacement (inches/metric)	89 cu. in./1457cc. (1.5-liters)	97.0 cu. in./1588cc. (1.6-liters)	89.7 cu. in./1471cc. (1.5-liters)
Compression ratio	8.0 to 1	8.2 to 1	23.5 to 1
Valve arrangement	Overhead cam, spur belt driven	Overhead cam, spur belt driven	Overhead cam, spur belt driven
Horsepower, SAE net	62 @ 5400 rpm	76 @ 5500 rpm	48 @ 5000 rpm
Maximum torque, SAE net	76.6 ft. lbs. @ 3000 rpm	California — 82.7 ft. lbs. @ 3200 rpm 49-States — 84.1 ft. lbs. @ 3200 rpm	56.5 ft. lbs. @ 3000 rpm
Fuel requirement	Unleaded gasoline	Unleaded gasoline	No. 2 diesel fuel
Ignition	Electronic (breakerless)	California — Electronic (breakerless) 49-States — Coil/Distributor (conventional)	Compression ignition
Design	Cylinder block in line, cast iron. Cylinder head, aluminum alloy.	Cylinder block in line, cast iron. Cylinder head, aluminum alloy.	Cylinder block in line, cast iron. Cylinder head, aluminum alloy.
Cooling system	Water-cooled. Electric radiator fan, thermostatically-controlled aluminum radiator, cross-flow design, closed and pressurized.	Water-cooled. Electric radiator fan, thermostatically-controlled aluminum radiator, cross-flow design, closed and pressurized.	Water-cooled. Electric radiator fan, thermostatically-controlled radiator, cross-flow design, closed and pressurized.
Fuel system	Single-stage carburetor with automatic choke.	Continuous Injection System (CIS)	Spur belt-driven distributor-injection pump; diesel injectors, "swirl cham- bers" and glow plugs.

ELECTRICAL SYSTEM

Rated voltage	12V
Alternator output	35-Amp (1.5 gasoline engine); 55-Amp (1.6 F.I. engine); 55-Amp (diesel engine)
Battery capacity	12V/45 Amp/hr (1.5 gasoline engine); 12V/54 Amp/hr (1.6 gasoline engine); 12V/63 Amp/hr (diesel engine).

DRIVE TRAIN

Clutch	Single disc, dry
Transmission, manual, standard	4-speed, transverse, front-mounted, fully synchronized transaxle. 1st gear: 3.45 to 1; 2nd gear: 1.94 to 1; 3rd gear: 1.29 to 1; 4th gear: 0.97 to 1; Reverse: 3.17 to 1
Transmission, manual, optional	5-speed. (As 4-speed, with addition of 5th gear, forward: 0.76 to 1)
Transmission, automatic, optional	3-speed, transverse, front-mounted transaxle. 1st gear: 2.55 to 1; 2nd gear: 1.45 to 1; 3rd gear: 1.00 to 1; Reverse: 2.46 to 1
Final drive	Front-wheel drive, double-jointed drive axles with constant-velocity (CV) joints.

CHASSIS AND SUSPENSION

Front suspension	Independent coil/shock absorber struts, negative steering roll radius
Rear suspension	Independent stabilizer axle with coil/shock absorber struts
Chassis	Unitized body/chassis, bolt-on front fenders; two-door hatchback models, four-door hatchback models, and two-door convertible model.

BRAKES AND WHEELS

Service brake	Power-assisted, hydraulic, dual-diagonal, disc, front; drums rear; brake-pressure regulator, rear*
Emergency brake	Mechanical, acting on rear drums
Rims	4½J x 13, steel rim (5J x 13, convertible)
Tires	155 x 13 (175 SR13, convertible)
Steering	Rack-and-pinion, double-pivot steering column; 3.9 turns, lock to lock.

*Only on models with automatic transmission

DIMENSIONS

Length/Width/Height	Unladen — 155.3"L x 63.4"W x 55.5"H (55.6", convertible)
Wheelbase (inches/metric)	Metric — 3945mm L x 1610mm W x 1410mm H 94.5"/2400mm
Track, front/rear	Inches — 54.7"/53.5"; Metric — 1390mm/1358mm
Turning circle (feet/meters)	31.2 ft/9.5 m (curb to curb)
Ground clearance (laden)	4.9"/125mm
Hatchback opening (ht/w/diag)	51¾"/29½"/48½"

CAPACITIES

Fuel tank	10.6 U.S. gallons (40 liters)
Engine oil	3.7 U.S. quarts (3.5 liters)
Coolant	1.3 U.S. gallons (4.7 liters)
Luggage space (seat up/down)	15.0 cu. ft./22.6 cu. ft. (9.9 cu. ft./28.1 cu. ft., convertible).

PERFORMANCE

Top speed	Gasoline — 93 mph.; Diesel — 87 mph.
0-50 mph.	8.3 seconds (Basic Rabbit model)
Fuel consumption	1980 EPA estimates not available at printing time; 1 August 1979.

Rabbit Convertible Colors/Trims

Exterior Colors



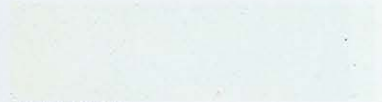
Mars Red 80



Lemon Yellow



Black



Alpine White



Colibri Green Metallic



Indiana Red Metallic



Brazil Brown Metallic



Diamond Silver Metallic

Rabbit Convertible is offered in a choice of **eight** exterior colors, **five leatherette** interior trims, as well as **three cloth** interiors and **two** convertible top colors — plus either brown or black dashboard.

Interior Fabrics



Black leatherette.
With Mars Red 80, Lemon Yellow.



Gazelle leatherette.
With Colibri Green Metallic.



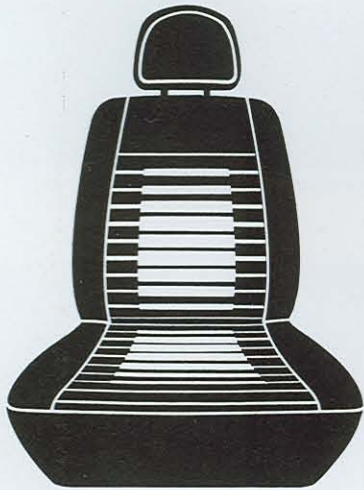
Van Dyck leatherette.
With Brazil Brown Metallic.



Red leatherette.
With Black, Diamond Silver Metallic.



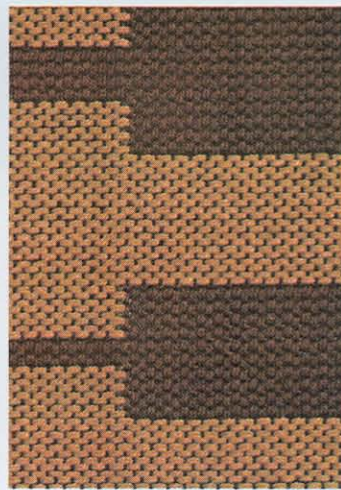
Ermine White leatherette.
With Alpine White, Indiana Red Metallic.



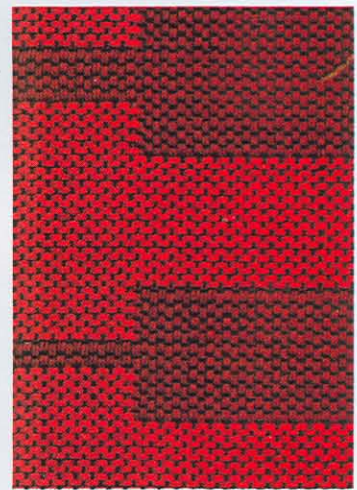
Convertible Sport Seat, optional.



Black/Silver "Strobe" cloth.
With Mars Red 80, Lemon Yellow.



Gazelle/Van Dyck "Strobe" cloth.
With Colibri Green Metallic, Brazil Brown Metallic.



Red/Black "Strobe" cloth.
With Black, Alpine White, Indiana Red Metallic, Diamond Silver Metallic.

Instrument Panel The color will be either Brown or Black, coordinated to blend harmoniously with interior trim colors. **Brown** instrument panel installed with Gazelle and Van Dyck interiors. **Black** with Black, Red, and Ermine White interiors.



Sand



Black

Top Color Availability

Two top colors are offered: Black and Sand. These colors are offered:

Black Top with Mars Red 80, Lemon Yellow, Black, and Diamond Silver Metallic exteriors.

Sand Top with Alpine White, Colibri Green Metallic, Brazil Brown Metallic, and Indiana Red Metallic.

For other exterior/interior color combinations, please ask your Volkswagen Dealer for details.



Dasher Maintains the tradition of gracious driving. Quality has been engineered in wherever you look. Your choice of fuel-injected gasoline or Diesel power. Front-wheel drive performance. Change the pattern of your driving style. Enjoy the benefits of today's engineering in a modern sedan or station wagon.



Scirocco Aerodynamic styling by Giugiaro. Fuel-injected, overhead-camshaft performance. Real 2+2 seating comfort. Front-wheel-drive handling. Ample luggage room to match your driving lifestyle. Crisp performance. Exclusive look. Quality finish, with coachwork by Karmann.



VW Pickup Truck An exciting new idea in pickup trucks. Handsomely styled. Front-wheel drive. Engineered for rugged versatility. Fun to drive. And, available with gasoline or optional Diesel power. It looks like a truck—but it drives like something else.



Vanagon/Vanagon Camper This all-new Volkswagen has a new freshness! A new name. And a brand-new all-around versatility. All-new Vanagon Camper carries on a long tradition of careful craftsmanship and flawless design. Test-drive Vanagon soon. You'll discover how...

**VOLKSWAGEN
DOES IT
AGAIN**

