



CABRIOLET

Etienne Aigner



The fun of driving a Cabriolet has just become excitingly fashionable. The designers

at Etienne Aigner, known worldwide for their elegant leather creations, have joined Volkswagen in developing this unique designer edition, limited production Cabriolet. Everything from the color-coordinated special fabric roof to the subtle integration of the Etienne Aigner horseshoe logo, works together to transform this Cabriolet's driving environment into a very personal fashion statement. The Etienne Aigner Cabriolet combines all of the lively performance characteristics of a Cabriolet—its 1.8 liter fuel injected engine, close-ratio 5-speed transmission, power rack and pinion steering and sport-tuned suspension—with a number of special features that include forged alloy wheels, cruise control, unique striped sport seats with leather accents, and a leather wrapped steering wheel, shift knob and boot. High fashion. Fun in the sun. And Fahrvergnügen. 🚗 Discover this rewarding and distinctly European driving experience by test driving our new designer edition Etienne Aigner Cabriolet.



**THE NEW
ETIENNE AIGNER
CABRIOLET.
FUN, FASHION AND
FAHRVERGNÜGEN.**





D *iving fun is*

now in fashion with the new Etienne Aigner Cabriolet. Outside, it features a special fabric top, color-coordinated top cover, glistening metallic paint and bright, forged alloy wheels. Inside, leather-accented sport seats and door trim panels complement its design. This is one new Cabriolet that's all dressed up and ready to go.





Standard Features

Cabriolet "Etienne Aigner" Edition

- Fahrvergnügen
- 1.8 liter, 94HP, 4-cylinder fuel-injected engine
- Close-ratio 5-speed manual transmission; power assisted rack and pinion steering
- Sport suspension including independent MacPherson front struts
- Independent stabilizer axle rear suspension; sport springs and shock absorbers
- 16.5mm front stabilizer bar; 20.5mm rear stabilizer bar
- Power assisted vented front disc brakes; self-adjusting rear drums
- Digifant engine management system; hydraulic valve lifters
- Dual round halogen headlamps
- 185/60R14H steel belted radial tires
- On board emission diagnostic system (California models)

Exterior

- Unitized construction with energy absorbing front and rear crush zones
- Color keyed integrated bumpers and aprons, front and rear
- Color keyed wheelhouse flares and rocker moldings
- Black front spoiler
- Dual remote controlled outside rearview mirrors with color keyed housings
- "Etienne Aigner" signature logo on front fenders
- Black narrow body side molding; black door handles with black inlays
- Manually operated, fully padded 3-layer fabric convertible top
- Color coordinated top cover with "Aigner" logo
- 6J x 14 bright forged alloy wheels
- Metallic paint: Bordeaux Red Pearl; Mangrove Green; Midnight Blue

Interior

- Full instrumentation including speedometer, tachometer, trip odometer, digital clock and other gauges
- Driver side air bag
- Center console with oil pressure, temperature and voltmeter gauges
- Unique design sport seats and door trim fabric with "Aigner" logo
- Leather accents on seats, armrests and door trim
- Height adjustable passenger side front seat; adjustable front headrests
- Rear folding seat with trunk access
- 3-point front seatbelts; two rear lap belts
- Leather wrapped four spoke steering wheel, shift knob, and boot
- Power front windows with fixed vent; manual rear windows
- Cruise control
- 6 amplified speaker AM/FM stereo cassette sound system with theft deterrent blinking red light and coding system
- Illuminated cassette storage
- Electrically heated rear glass window; side window defoggers
- Locking glove box; front door map pockets; right hand vanity mirror
- Air conditioning preparation; tinted glass

Options

- 3-speed automatic transmission
- Air conditioning
- Power operated convertible top

Engine

	Cabriolet "Etienne Aigner" Edition
Engine type	4 cylinder in-line
Displacement	109 cu. in.
Horsepower @ RPM (SAE net)	94 @ 5,400
Maximum torque ft.-lbs. @ RPM	100 @ 3,000
Engine arrangement	Front mounted, transverse
Cylinder block	Cast iron
Valve train	Single overhead cam; spur belt driven, hydraulic lifters
Drive train	Front wheel drive
Cooling system	Water cooled, cross-flow aluminum radiator, water pump, electric radiator fan
Fuel/air supply	Fuel injection (Digifant)
Fuel requirement	Regular unleaded
Emission system	3-way catalyst, oxygen sensor

Body, Chassis and Suspension

Type	Unitized construction, bolt-on front fenders
Front suspension	Independent MacPherson struts, 16.5mm stabilizer bar, coil springs, telescopic shock absorbers
Rear suspension	Independent stabilizer axle, 20.5mm stabilizer bar, coil springs, telescopic shock absorbers
Steering	Power assisted rack and pinion
Brakes	Dual diagonal circuits with power assisted 9.4" vented front discs and 7.1" rear drums, self-adjusting
Parking brake	Mechanical to rear wheels
Wheels and tires	6J x 14 forged alloy wheels with 185/60R14H steel belted radial tires

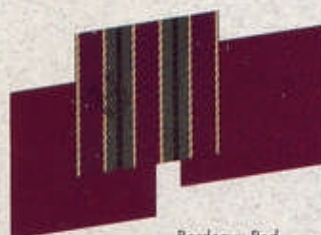
Capacities

Engine oil	4.3 quarts with filter
Fuel capacity	13.8 U.S. gallons
Cooling system	5.1 quarts

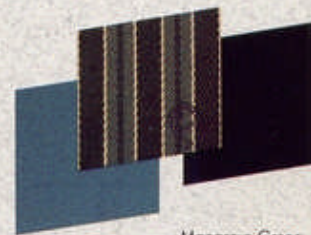
EPA Mileage Estimates/Performance Data*

	City	Highway	0-50 MPH	0-60 MPH	Top track speed
5-speed manual	25	32	7.1 sec.	9.9 sec.	102 MPH
3-speed automatic	23	28	9.0 sec.	12.3 sec.	99 MPH

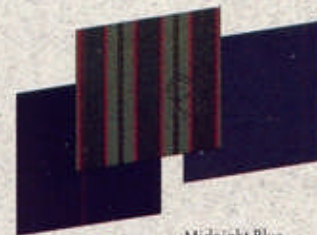
*1991 EPA estimates. Your mileage may vary.



Bordeaux Red Pearl Metallic



Mangrove Green Metallic



Midnight Blue Metallic

Volkswagen United States, Inc. believes the specifications in this brochure to be correct at time of printing. However, specifications, standard equipment and options are subject to change without notice. R is a registered trademark of Etienne Aigner, Inc. Volkswagen and the Volkswagen logo are registered trademarks of Volkswagen AG. Fahrvergnügen and the "Otto Bahn" character are trademarks of Volkswagen United States, Inc. Form No. W63 491 6221 Litho in U.S.A.


FAHRVERGNÜGEN.