

Volkswagen Cabriolet DIY Guide

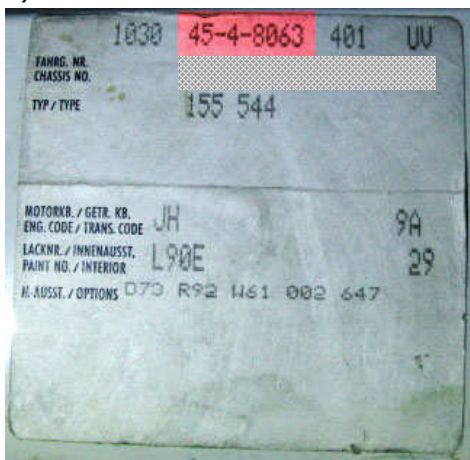
Determining Your Car's Build Date

Step 1: On the driver's side door jamb, locate the build month and build year on the VIN plate.



In this example, the build month is November (11) and the build year is 1985.

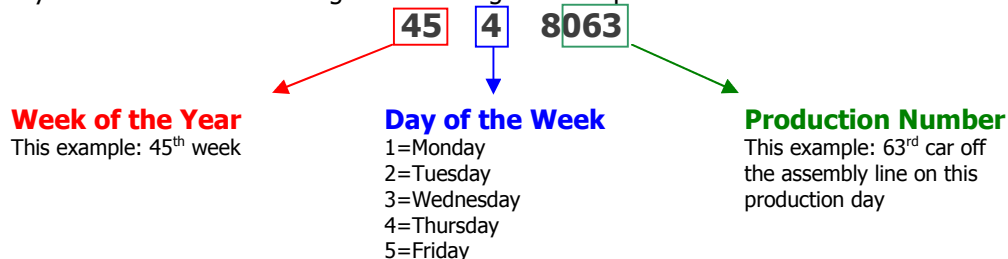
Step 2: Inside the trunk, locate your car's build sheet sticker. It is usually on the left side of the crossbar. On this sticker, locate the PKN code at the top of the sticker. Or, locate the PKN plate riveted to your car's slam panel (aka radiator support).



In this example, the PKN code on the sticker is 45-4-8063 (same as 454-8063 on the plate).

Step 3: Use an Internet search engine to locate a calendar for your car's build year. One such site is <http://www.timeanddate.com/calendar/?year=1985>. Replace 1985 with your build year, and go to More Options > Advanced Customization > Weeks > "Yes; show Monday..." > Show Calendar to show week numbers. It's best to use this option in order to obtain the correct week; remember that week 1 begins with the first Monday in January. Use this calendar to determine the week and day in Step 4.

Step 4: Determine your car's build date using the following as a template:



This car's build date: Thursday, November 7, 1985.